



FOLKESTONE & HYTHE DISTRICT  
**COMMUNITY SAFETY  
PARTNERSHIP**

# Community Safety Partners

Folkestone & Hythe Community Safety Partnership (CSP) and Community Safety Unit (CSU) works together to drive multi-agency practices to achieve the best outcomes for the community.

Our Community Safety Partnership consists of 6 statutory partners as well as over 40 other key agencies who form the CSU.



FOLKESTONE & HYTHE DISTRICT  
**COMMUNITY SAFETY  
PARTNERSHIP**



**Kent Fire &  
Rescue Service**



**Kent  
Police**

**NHS**  
*South Kent Coast*



FOLKESTONE & HYTHE DISTRICT  
**COMMUNITY SAFETY  
PARTNERSHIP**

As statutory requirement of the Crime and Disorder Act 1998 and the Police Reform Act 2002, the Community Safety Partnership (CSP) exists to ensure partners collaborate to tackle crime and anti-social behaviour.

Together we are committed to:

- Working together to make the district a safe place to work, live and enjoy;
- Reducing anti-social behaviour and crime and disorder;
- Building stronger communities.

We identify local priorities by monitoring crime patterns, developing an annual strategic assessment, consultation with communities and partners. These are set by the Community Safety Partnership, and published in the Community Safety Plan

# FOLKESTONE & HYTHE DISTRICT COMMUNITY SAFETY PARTNERSHIP PLAN

1 April 2021 - 31 March 2024



FOLKESTONE & HYTHE  
COMMUNITY SAFETY  
PARTNERSHIP





FOLKESTONE & HYTHE DISTRICT  
COMMUNITY SAFETY  
PARTNERSHIP

# CSP Structure



- 3-year safety plan
- Subgroups are key delivery arms for the priorities
- CSU is the operational arm of the CSP



# Subgroup Chairs

## Safeguarding and Domestic Abuse

Rebekah Button, Integrated Family Service Manager, Kent County Council  
Sam O'Connor, CEO, Home-Start Shepway

## Crime and Community Resilience

DI James Wyles, CSU Inspector, Kent Police  
Garry Scott, Senior Probation Officer

## Community Safety

Scott Butler, Community Safety Specialist, FHDC  
Tara Liam, Community Safety Officer, FHDC



# CSP Priorities



## Community Safety Partnership priorities – 2024

### Safeguarding & Domestic Abuse Subgroup

- Domestic abuse
- Mental health
- Drugs and alcohol
- Safeguarding children and adults
- District Contextual Safeguarding Meeting (DCSM) – Children
- Missing children

### Cross Cutting Themes

Violence Reduction – Including VAWG & PREVENT awareness

Health & Wellbeing

Young People

Delivery of some of the activities that the CSP is responsible for occurs through a range of multi-agency meetings and task and finish groups.

### Crime & Community Resilience

- Modern slavery and human trafficking
- Cuckooing, gangs, county lines and criminal exploitation
- Fraud
- Financial and acquisitive crime
- Drug dealing
- Integrated Offender Management
- Hate/mate crime
- Prevent strategy
- Violence reduction
- Serious and organised crime (SOC) and Organised crime groups (OCGs)
- District Vulnerabilities Panel (DVP) – adults

- Reduce Re-offending

### Community Safety Unit

- Anti-social behaviour
- Public Spaces Protection Order
- Environmental crime/environmental health
- Town centres
- Licensing
- Events
- Hotspot locations
- Substance misuse
- Diversionary activities
- Housing
- Homeless
- High risk adults and young people
- Community triggers
- Prison releases
- Community protection warnings and community penalty notices
- Unauthorised encampments

# Brief 'Strategic Assessment' Overview



FOLKESTONE & HYTHE DISTRICT  
**COMMUNITY SAFETY  
PARTNERSHIP**



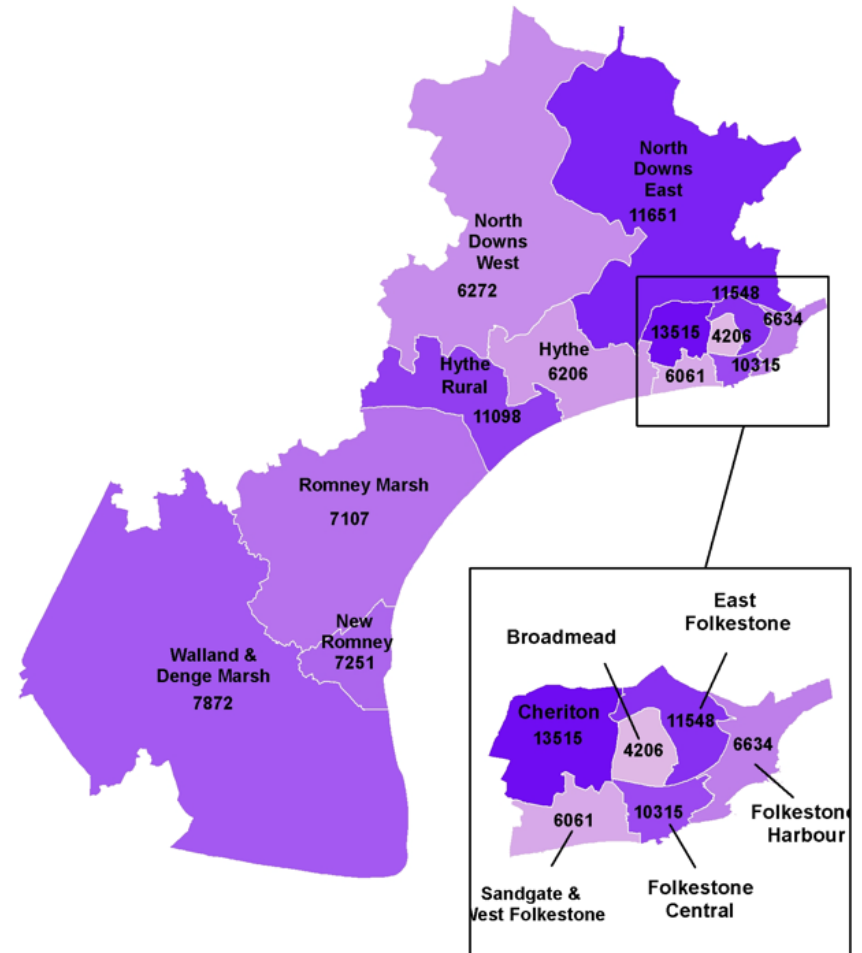
# Population

Folkestone urban area is home to **47.77%** of the total population

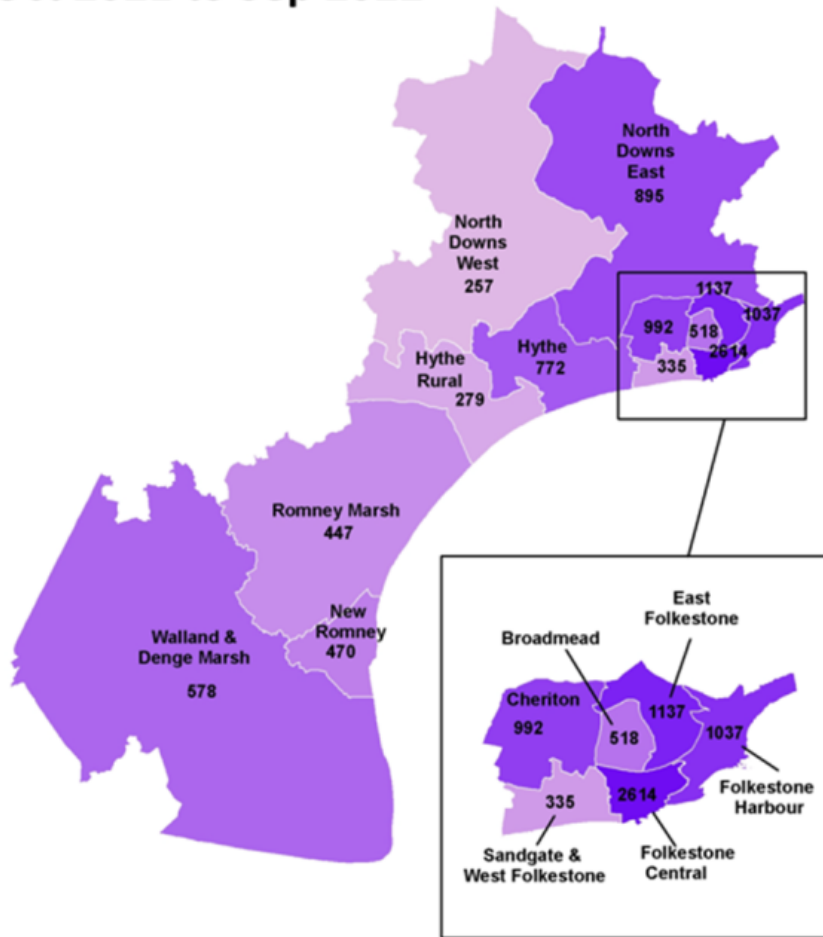
**15.55%** of the district's residents live in Hythe urban area

The remaining **36.68%** live across the remaining sub urban and rural areas.

## Population by Ward: 2021



## Crime Totals by Ward Oct 2021 to Sep 2022



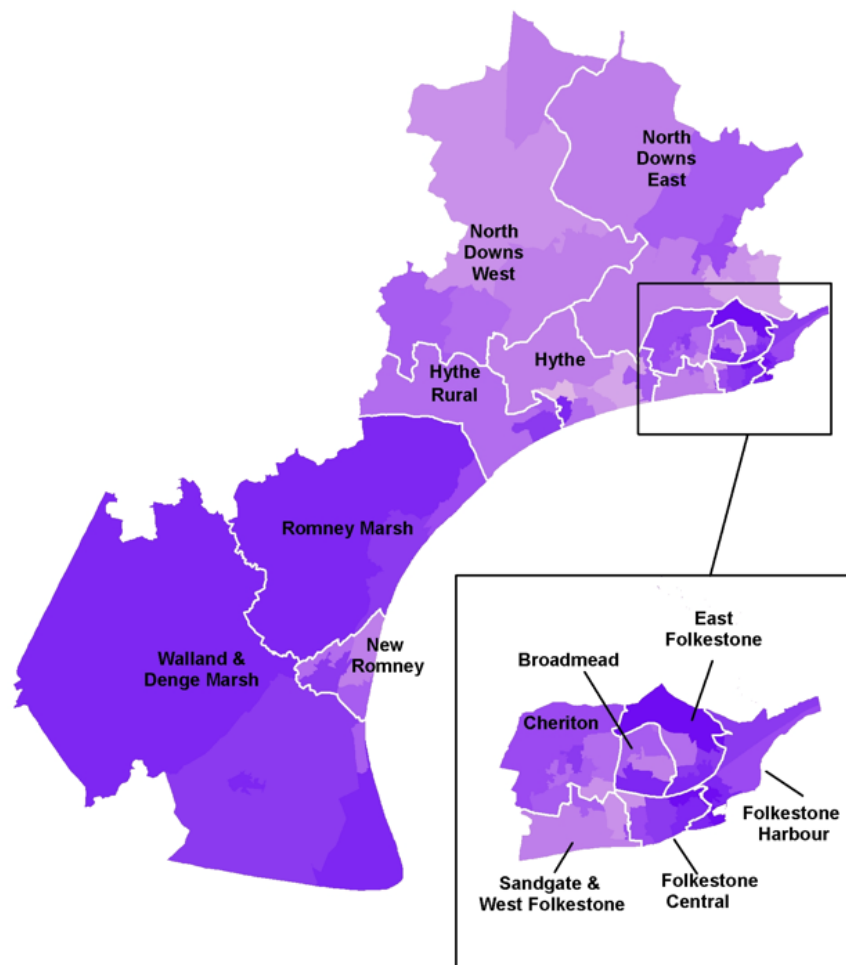
## Crime Data

The graph shows a total of all crime for each ward in the Folkestone & Hythe district between 01/10/2021 – 30/09/2022.

**Folkestone Central** ward has the highest total crimes with **2614**

**North Downs West** has the least total crimes with **257**.

## Index of Multiple Deprivation 2019



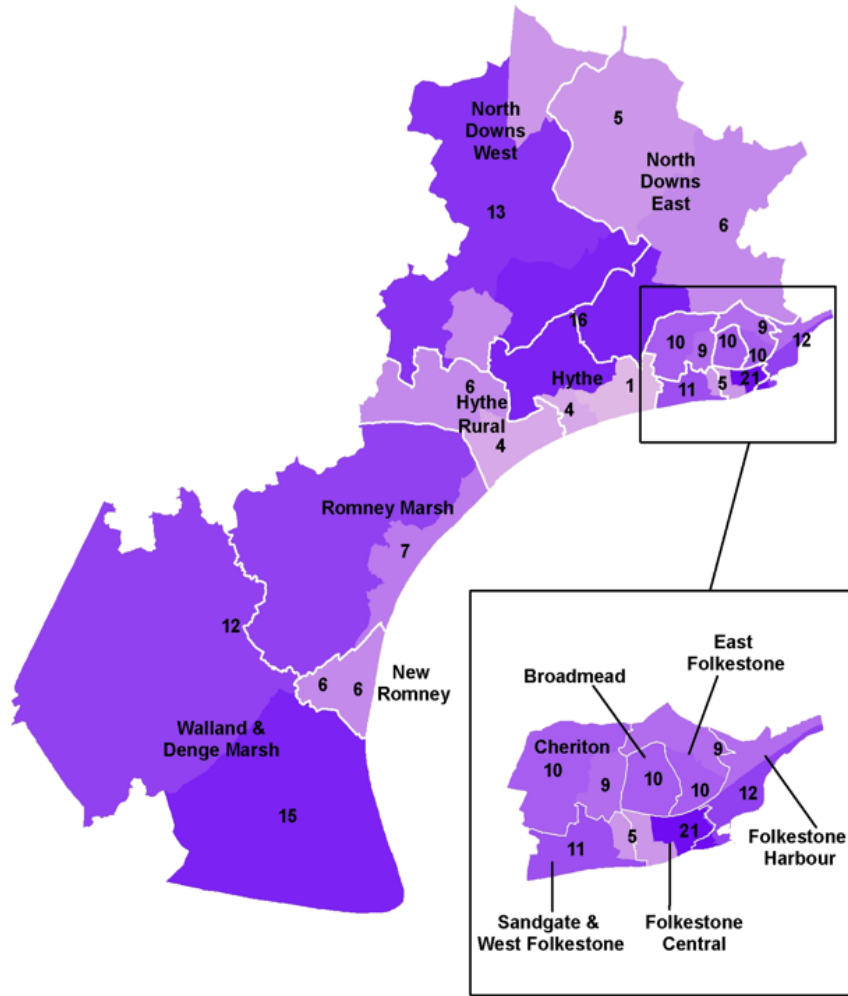
## Deprivation Data

On the national ranking, Folkestone & Hythe has moved up by **17** positions from **101<sup>st</sup>** in 2015 to **84<sup>th</sup>** most deprived in 2019, which indicates that the level of deprivation in Folkestone & Hythe has **increased**, relative to other areas in England.

Folkestone & Hythe's unemployment rate is currently **3.9%** which is higher than the county average of **3.2%** and the national average of **3.7%**.

## Total Fires:

October 2020 - September 2021



## Fire Data

Map shows the number of fires recorded by ward

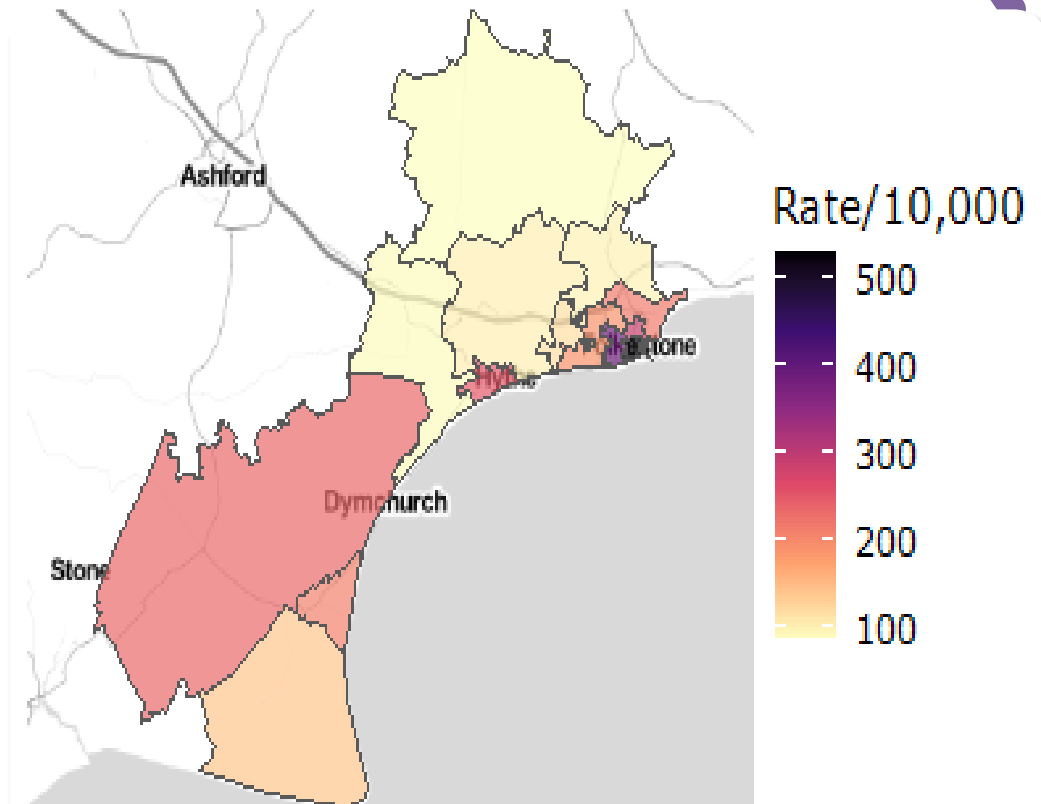
The Ward boundaries are the historic Wards.

it is not a surprise to see that some of the darker areas are the same as those areas of higher deprivation.

# Hospital Alcohol Data

The map shows emergency admissions for alcohol, count of admissions by patient MSOA, 2021/22 all ages.

Again, we can compare the hospital alcohol admissions directly correlate with deprivation.



Base map source:

Map tiles by Stamen Design, under CC BY 3.0. Data by OpenStreetMap, under ODbL

Digital boundary source:

Office for National Statistics licensed under the Open Government Licence v.3.0

Contains OS data © Crown copyright and database right 2023





FOLKESTONE

# Safer Streets



FOLKESTONE & HYTHE DISTRICT  
COMMUNITY SAFETY  
PARTNERSHIP

Our funding application was for Folkestone Central Ward (LSOA Shepway 014C). This area was chosen due to the crime data and statistics which met the funding requirements.

## Total funding confirmed £335,546.64

The funding will seek to target and reduce sexual offences / accosting's, stalking and harassment, violence against the person, retail theft, ASB, theft from motor vehicle / vehicle interference, burglary (commercial), theft from the person and drug offences, alongside the secondary crime type of criminal damage.

Project delivery will include:

- Upgrading the Folkestone Town Council CCTV network,
- Upgrade and re-connect 5 deployable CCTV cameras,
- Upgrade the Folkestone Area Partnership Against Crime (FAPAC) radio network,
- Window wraps for empty shop fronts,
- Active Bystander Training, VAWG Training and Contextual Safeguarding Training,
- Youth Outreach to tackle ASB,
- Map and Signpost Safe Routes,
- Graffiti and litter removal,
- Develop a Safe Taxi Scheme and safety improvements to the taxi ranks,
- Support the Urban Pastors,
- Establish a new Neighbourhood Watch area and promote messaging systems,
- Promote Holli Guard App.

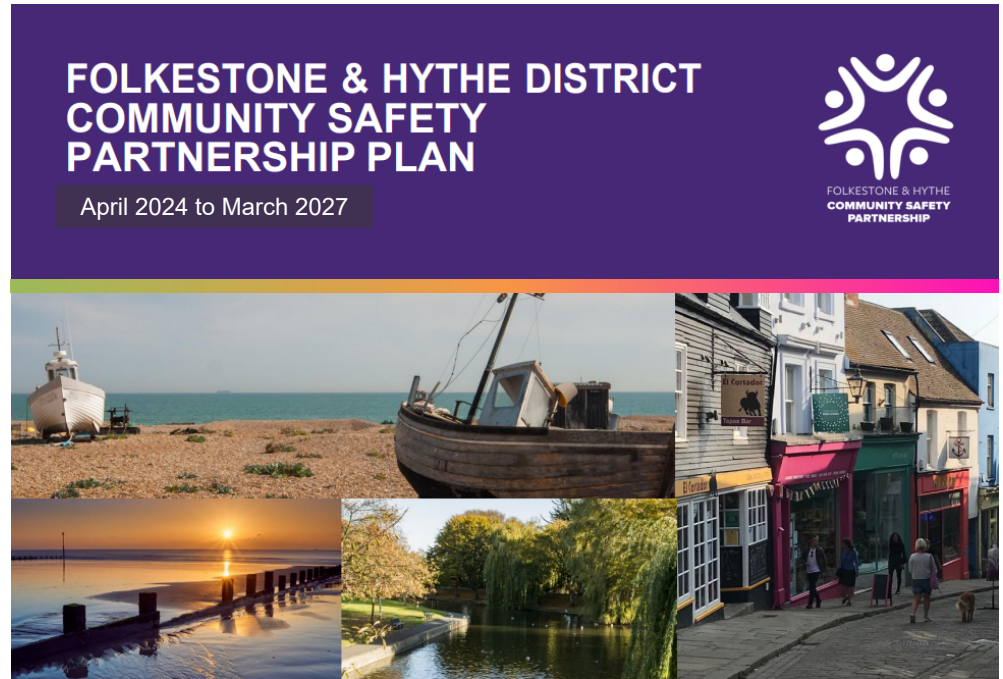


Project Delivery Stakeholders: PCC, Kent Police, KCC, Rising Sun, Home Start, Urban Pastors, FHDC CSU, Licensing, FAPAC, Folkestone Town Council, Neighbourhood Watch, Bouverie Place, and NSL.



# CSP 24-27 Year Plan

- Currently being drafted for CLT
- Same foundations as current plan
- Removal of 'Coronavirus and withdrawal of the United Kingdom from the European Union (Brexit)'



- More emphasis on supporting young people, health and wellbeing.
- Inclusion of Safer Streets project, with best practice being used across district.

# Crime & Community Resilience

DI 12365 James WYLES



**Kent  
Police**

**Protecting and serving** the people of Kent

# Control Strategy



**Kent  
Police**

**Protecting and serving** the people of Kent

# NHP Model

## Prevention Hub

Child Centred  
Policing Team  
(CCPT)

Neighbourhood  
Task Force (NTF)

Beat Team

Rural Task Force  
(RTF)

### CCPT – Blended

- Prevention and early intervention with young people
- Engagement with schools and higher education
- Problem solving with partners
- Dealing with repeat victim/offender/location
- Identifying vulnerability and exploitation
- Youth outcomes

### NTF - Blended

- Enhanced problem solving
- “Drag and drop” into high harm
- Supporting Beat Officers
- Visible targeted activity
- Seasonal demand/county operations
- Working collaboratively with the community, partners and internal departments to reduce harm through problem solving

### Beat Team

- Visible and accessible presence
- Local ownership of problems/repeat/high harm
- Supporting seasonal demand NTE and VAWG
- Retail crime
- ASB
- Problem solving with partners
- Local engagement/meetings

### Prevention Hub

- Problem solving with partners (enhanced strategic level)
- Expert level support to all officers – ASB/Licencing/OSARA
- Oversight of NTE
- Licencing
- Designing Out Crime
- MCV
- Offender management

# Multi Agency Targeted Operations

- Violence against Women and Girls (VAWG)
  - Op MARSEILLES: Over-arching OSARA Plan
  - Op LEDGER: Tackling Accosting
  - Hybrid Event at Folkestone Police Station 26/04/2023
  - Walk and Talk 07/07/2023, 20/10/23, 08/12/23
- Op SENTRY: Road Safety in the district
- Op PIGLET: Tackling organised cooking oil theft
- Op ASSIST: Environmental & Waste Crime (vehicular)
- Op CHINOOK: NTF Response to targeted areas of concerns
- Op SCEPTRE: Tackling knife crime





# My Community Voice

Protecting the neighbourhoods of Kent and Medway

MCV is a two-way engagement tool brought to you by Kent Police

Find out what's happening in your area



Receive alerts from your local officers

Tell us what matters most to you



Sign up



Sign up today and  
make your voice count



Find out more [www.MyCommunityVoiceKent.co.uk](http://www.MyCommunityVoiceKent.co.uk)



**Kent  
Police**

**Protecting and serving** the people of Kent



# Crime data

## Profound reduction in retail theft in Town Centre Wards (Harbour and Central)

Folkestone Central Ward: -18.7% in financial year, -13.9% in rolling year  
Folkestone Harbour Ward: -80% in financial year, -57.1% in rolling year

## Significant reductions in all crime over the financial, with notable reductions in vehicle crime (TFMV -83% in Central Ward)

Folkestone Central Ward: -25% victim-based crime, -3% crime against society -22% all crime  
Folkestone Harbour Ward: -22% victim-based crime -17% all crime (+19% crimes against society)

The increase in crime against society in Harbour ward is driven by a 133% increase in drug possession but this arises from proactive policing and significant increase in stop and search drug finds.

## Significant reductions in ASB

Folkestone Harbour Ward: -10% in financial year, -11% in rolling year  
Folkestone Central Ward: -75% in financial year, -126% in rolling year

# Protecting people susceptible to radicalisation



The aim of Prevent is to stop people from becoming terrorists or supporting terrorism. The objectives of Prevent are to: tackle the ideological causes of terrorism. intervene early to support people susceptible to radicalisation. enable people who have already engaged in terrorism to disengage and rehabilitate

Section 36 CTSA 2015 sets out the duty for local authorities to ensure that there is a local panel in place to assess, and to provide support for, people **susceptible** to being drawn into terrorism.<sup>1</sup> For the purpose of this guidance, the term 'Channel' refers to the local authority-led support and the duty as set out in CTSA 2015. In England and Wales, this duty is met through 'Channel panels'.



FOLKESTONE & HYTHE DISTRICT  
**COMMUNITY SAFETY  
PARTNERSHIP**